

Hand Controller HC-IP



Part No. A9009-0002



Copyright © 2017

All rights reserved.

Original Instructions: English

All rights reserved throughout the world. No part of this publication may be stored in a retrieval system, transmitted, copied or reproduced in any way, including, but not limited to, photocopy, photograph, magnetic or other record without the prior agreement and permission in writing of the Vitec Group Plc.

Disclaimer

The information contained in this publication is believed to be correct at the time of printing. Vitec Videocom Ltd reserves the right to make changes to the information or specifications without obligation to notify any person of such revision or changes. Changes will be incorporated in new versions of the publication.

We are making every effort to ensure that our publications are updated on a regular basis to reflect changes to product specifications and features. Should this publication not contain information on the core functionality of your product, please let us know. You may be able to access the latest revision of this publication from our website.

Vitec Videocom Ltd reserves the right to make changes to product design and functionality without notification.

Trademarks

All product trademarks and registered trademarks are the property of The Vitec Group Plc.

All other trademarks and registered trademarks are the property of their respective companies.

Published by:

Vitec Videocom Ltd

Email: technical.publications@vitecgroup.com

Safety .. .	2	Routine Maintenance .. .	10
Electrical Connection .. .	2	Routine checks .. .	10
Mounting and Installation .. .	3	Cleaning .. .	10
Water, Moisture and Dust .. .	3	Technical Specification .. .	11
Operating Environment .. .	3	Troubleshooting .. .	12
Maintenance .. .	3	General Notices .. .	16
Components and Connections .. .	4		
Top View .. .	4		
Front View .. .	5		
Box Contents .. .	6		
Installation .. .	7		
Powering Up .. .	7		
Operation .. .	8		

Important information on the safe installation and operation of this product. Read this information before operating the product. For your personal safety, read these instructions. Do not operate the product if you do not understand how to use it safely. Save these instructions for future reference.

Warning Symbols Used in these Instructions

Safety cautions are included in these instructions. These safety instructions must be followed to avoid possible personal injury and avoid possible damage to the product.



WARNING! Where there is a risk of personal injury or injury to others, comments appear supported by the warning triangle symbol. Where there is a risk of damage to the product, associated equipment, process or surroundings, comments appear supported by the word '**CAUTION**'.

Electrical Connection



WARNING! Always disconnect and isolate the product from the power supply before attempting any servicing or removing the covers.



CAUTION! The products must be connected to a power supply of the same voltage (V) and current (A) as indicated on the product. Refer to the technical specifications for the products

Mounting and Installation



WARNING! Always ensure that all cables are routed so that they do not present any danger to personnel. Take care when routing cables in areas where robotic equipment is in use.

Water, Moisture and Dust



WARNING! Protect the product from water, moisture and dust. The presence of electricity near water can be dangerous.



WARNING! When using this product outside, protect from rain using a suitable waterproof cover.

Operating Environment



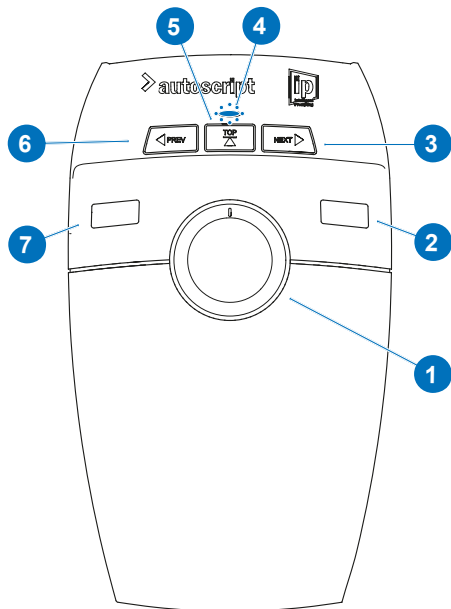
CAUTION! The product should not be used outside the operating temperature limits. Refer to the product technical specifications for the operating limits for the product.

Maintenance



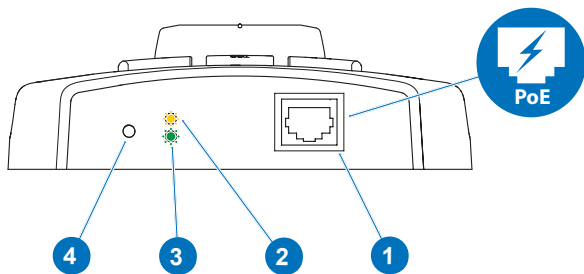
WARNING! Servicing or repair of this product must only be performed by qualified and trained engineers.

Top View



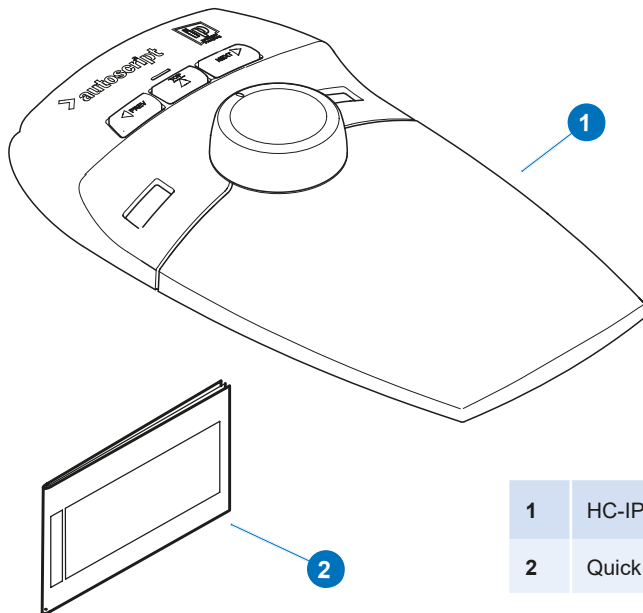
1	Scroll wheel (forwards backwards)
2	Right programmable function button (illuminated)
3	Next button
4	Status LED
5	Top of script button
6	Previous button
7	Left programmable function button (illuminated)

Front View



1	RJ45. Powered over Ethernet Requires 3rd party PoE injector or XBox-IP (not included)
2	Data LED
3	Link LED
4	Factory Reset

Box Contents



1

HC-IP Controller

2

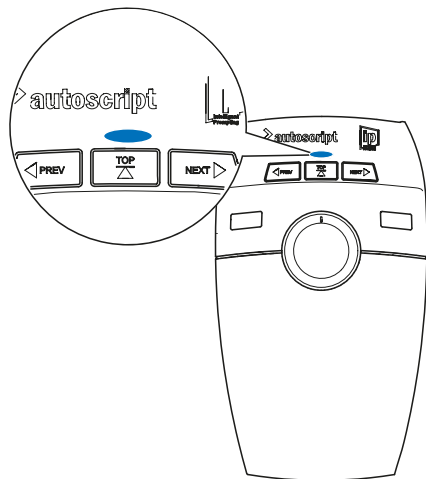
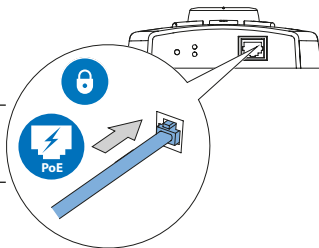
Quick Start Guide

Powering Up

The controller is automatically powered up when the PoE Ethernet cable Cat5 or Cat6 cable is attached.



Requires 3rd party PoE injector or XBox-IP (not included)



Status LED



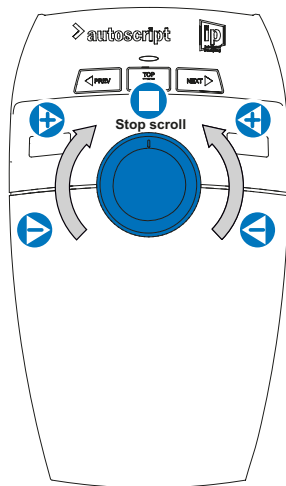
Status LED and programmable function buttons flash once: **Powered on.**



Flashing Blue light: **Connected to the application but not the network.**



Solid Blue light: **Connected to the network.**



Forward scroll control



Slow forward speed



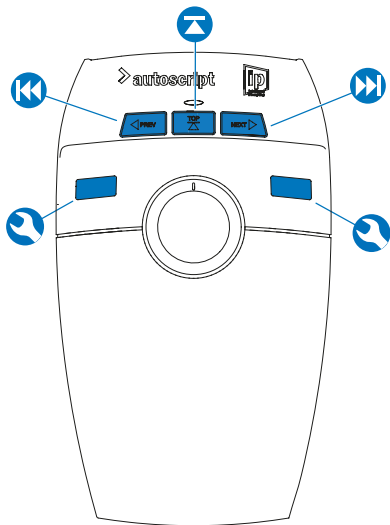
Backward scroll control



Slow backward speed



Stop scroll position



First press - Back to top of the current story. Subsequent presses - To top of previous story.



Returns the prompter text to the top of the run order.



Advances to the top of the next story.



Customisable buttons from within WinPlus IP software.

Routine Maintenance

The HC-IP Controller requires minimal routine maintenance, apart from checking the connections and overall operation periodically.

Routine checks

During use, check the following:

- Check PoE Ethernet cable for signs of wear or damage. Replace as necessary.
- Check the PoE Ethernet cable is connected properly.
- Check the Buttons and scroll wheel all move freely.

Cleaning

During normal use the only cleaning required should be a regular wipe over with a dry, lint-free cloth. Dirt accumulated during storage or periods of disuse may be removed with a vacuum cleaner. Particular attention should be paid to the connection port.



WARNING! Disconnect and isolate the product from the power supply before cleaning.

Physical Data

	HC-IP
Width*	134 mm (5.27 in)
Length*	230 mm (9.05 in)
Height*	42 mm (1.65 in)
Weight	500 g (1.1 lb)

Standard Function Buttons

- Next Story
- Previous Story
- Top of Run Order

Programmable Function Buttons

- 2 x Illuminated.

Power

- 3 W Max.
- Powered over Ethernet (PoE)
- Third party PoE Injector Required or XBox-IP (not included)

Status LED's

- Connection
- Data
- Link

Environmental Data

- Operating temperature range
+5°C to +40°C (+41°F to +104°F)
- Storage temperature range
-20°C to +60°C (-4°F to +140°F)

Fault	Check
The HC-IP is not powering up	Check that the power over Ethernet source has a suitable power injector
	Check that the cable from the PoE source is firmly locked into the PoE input on the HC-IP
	Check that a quality Cat5 or Cat6 cable has been used to connect to the PoE injector
The HC-IP is powered up, but not controlling the prompted text	Check that any connections to controllers are correct and secured
	Confirm that the HC-IP is enabled in the Devices window
	Check that a quality Cat5 or Cat6 cable has been used to connect the controller to the PoE injector
The HC-IP has locked and is not responsive	Power cycle the HC-IP by removing the PoE Injector connection
The HC-IP is not discovered on a local IP network	Check that the HC-IP and the software application are not separated by an IP gateway
	Check that the device is not already connected to another different network
	If added to the system manually check the correct details are entered in the Manually Add Device fields
The HC-IP IP address is not configurable correctly from the application	Check that the correct IP address has been added for the HC-IP. (i.e. has this IP address been used for a different device)

FCC Certification



FCC Warning

Changes or modifications not expressly approved by the party responsible for compliance could void the user's authority to operate the equipment.

FCC Declaration of Conformity

This product complies with Part 15 of the FCC Rules. Operation is subject to the following two conditions:

1. This product may not cause harmful interference.
2. This product must accept any interference received, including interference that may cause undesired operations.

Declaration of Conformity



Vitec Videocom Limited declares that this product has been manufactured in accordance with BS EN ISO 9001:2008.

This product complies with the following EU Directives:

- Low Voltage Directive 2014/35/EU
- EMC Directive 2014/30/EU

Compliance with these directives implies conformity to applicable harmonised European standards (European Norms) which are listed on the EU Declaration of Conformity for this product or product family. A copy of the Declaration of Conformity is available upon request.

Environmental considerations



European Union Waste of Electrical and Electronic Equipment (WEEE) Directive (2012/19/EU)

This symbol marked on the product or its packaging indicates that this product must not be disposed of with general household waste. In some countries or European Community regions separate collection systems have been set up to handle the recycling of electrical and electronic waste products. By ensuring this product is disposed of correctly, you will help prevent potentially negative consequences for the environment and human health. The recycling of materials helps conserve natural resources.

Visit our website for information on how to safely dispose of this product and its packaging.

In countries outside the EU:

Dispose of this product at a collection point for the recycling of electrical and electronic equipment according to your local government regulations.

Publication No. A9009-4981/1



www.autoscript.tv